

mix it up with color!

If you've ever wondered which colors look best together, the Color Coach® has been there to help. But what about Stampin' Up!'s In Colors™? These six trendy colors expand your color options and complement our exclusive color families too! Use this chart to help you mix and match In Colors with Bold Brights®, Earth Elements®, Rich Regals®, Soft Subtles®, and Neutrals, and find the perfect color combination every time!

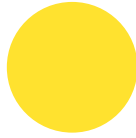
 cool caribbean	 certainly celery	 real red	 not quite navy	 cool caribbean	 pumpkin pie	 old olive	 real red
 cool caribbean	 green galore	 apricot appeal	 rose red	 cool caribbean	 marigold morning	 old olive	 cameo coral
 cool caribbean	 certainly celery	 bashful blue	 pretty in pink	 cool caribbean	 vintage violet	 really rust	 true thyme
 cool caribbean	 regal rose	 so saffron	 certainly celery	 cool caribbean	 vintage violet	 ruby red	 chocolate chip
 cool caribbean	 chocolate chip	 sahara sand	 old olive	 cool caribbean	 real red	 old olive	 tempting turquoise



cool
caribbean



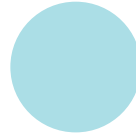
green
galore



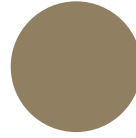
summer
sun



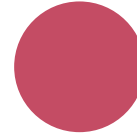
only
orange



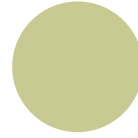
cool
caribbean



true
thyme



rose
red



certainly
celery



cool
caribbean



always
artichoke



certainly
celery



so
saffron



cool
caribbean



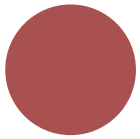
sage
shadow



rose
red



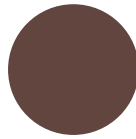
vintage
violet



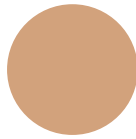
cranberry
crisp



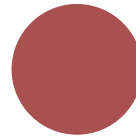
sage
shadow



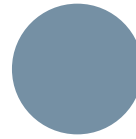
chocolate
chip



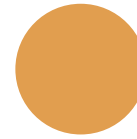
creamy
caramel



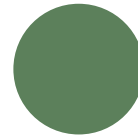
cranberry
crisp



buckaroo
blue



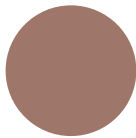
more
mustard



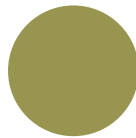
garden
green



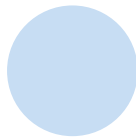
cranberry
crisp



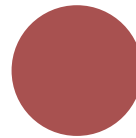
close to
cocoa



old
olive



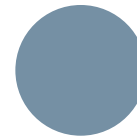
bashful
blue



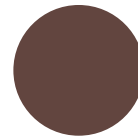
cranberry
crisp



true
thyme



buckaroo
blue



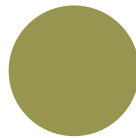
chocolate
chip



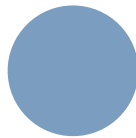
cranberry
crisp



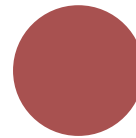
pumpkin
pie



old
olive



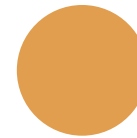
brocade
blue



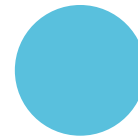
cranberry
crisp



true
thyme



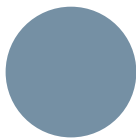
more
mustard



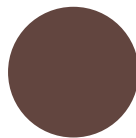
tempting
turquoise



cranberry
crisp



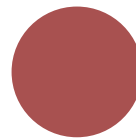
buckaroo
blue



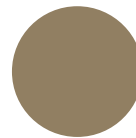
chocolate
chip



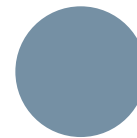
sahara
sand



cranberry
crisp



true
thyme



buckaroo
blue



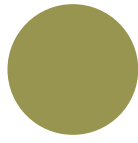
marigold
morning



cranberry
crisp



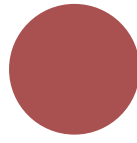
chocolate
chip



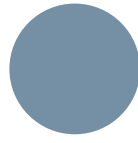
old
olive



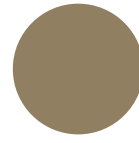
taken with
teal



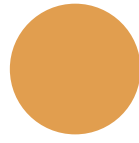
cranberry
crisp



buckaroo
blue



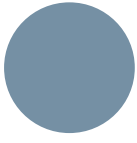
true
thyme



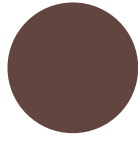
more
mustard



true
thyme



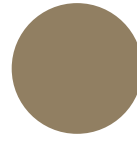
buckaroo
blue



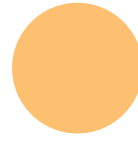
chocolate
chip



pumpkin
pie



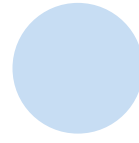
true
thyme



marigold
morning



barely
banana



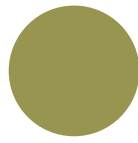
bashful
blue



marigold
morning



vintage
violet



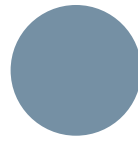
old
olive



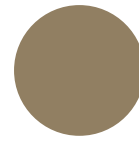
rose
red



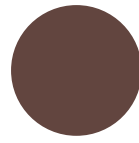
marigold
morning



buckaroo
blue



true
thyme



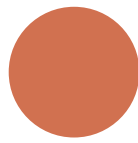
chocolate
chip



marigold
morning



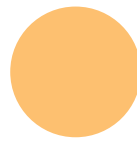
true
thyme



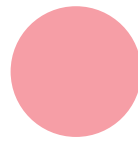
really
rust



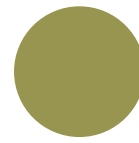
always
artichoke



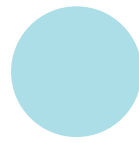
marigold
morning



regal
rose



old
olive



cool
caribbean



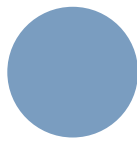
marigold
morning



pumpkin
pie



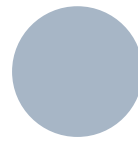
always
artichoke



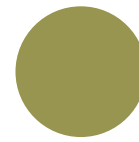
brocade
blue



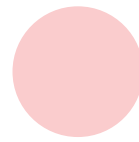
marigold
morning



bordering
blue



old
olive



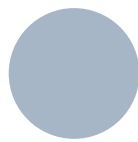
pretty in
pink



marigold
morning



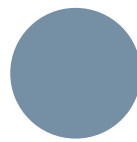
perfect
plum



bordering
blue



certainly
celery



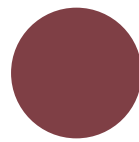
buckaroo
blue



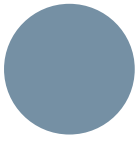
true
thyme



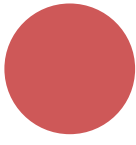
sahara
sand



bravo
burgundy



buckaroo blue



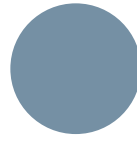
ruby red



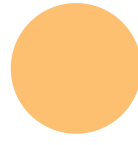
mellow moss



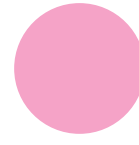
sahara sand



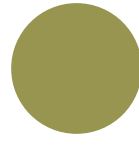
buckaroo blue



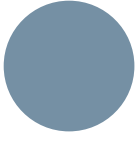
marigold morning



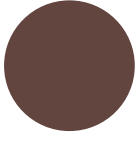
pixie pink



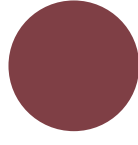
old olive



buckaroo blue



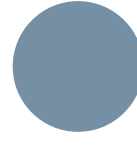
chocolate chip



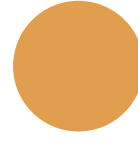
bravo burgundy



not quite navy



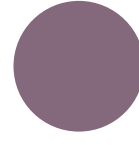
buckaroo blue



more mustard



old olive



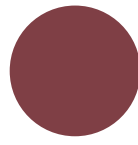
perfect plum



vintage violet



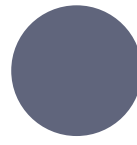
old olive



bravo burgundy



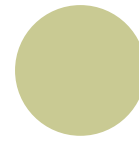
always artichoke



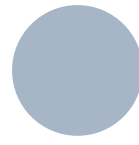
vintage violet



sage shadow



certainly celery



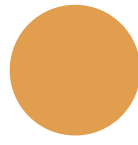
bordering blue



vintage violet



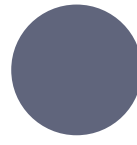
true thyme



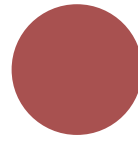
more mustard



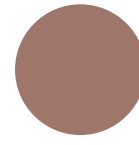
rose red



vintage violet



cranberry crisp



close to cocoa



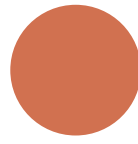
mellow moss



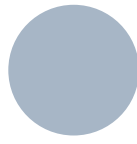
vintage violet



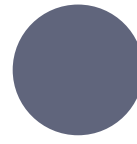
mellow moss



really rust



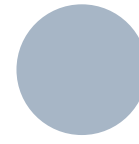
bordering blue



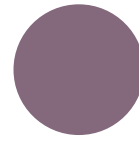
vintage violet



true thyme



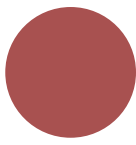
bordering blue



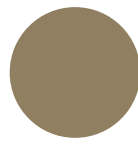
perfect plum



vintage violet



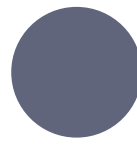
cranberry crisp



true thyme



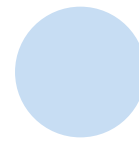
sage shadow



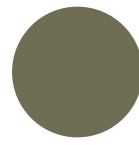
vintage violet



marigold morning



bashful blue



always artichoke