

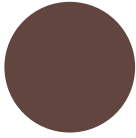
mix it up with color!

If you've ever wondered which colors look best together, the Color Coach® has been there to help. But what about Stampin' Up!'s In Colors™? These six trendy colors expand your color options and complement our exclusive color families too! Use this chart to help you mix and match In Colors with Bold Brights®, Earth Elements®, Rich Regals®, Soft Subtles®, and Neutrals, and find the perfect color combination every time!

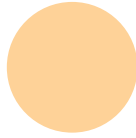
							
purely pomegranate	pumpkin pie	bashful blue	old olive	purely pomegranate	blue bayou	mellow moss	river rock
							
purely pomegranate	river rock	always artichoke	more mustard	purely pomegranate	mellow moss	so saffron	not quite navy
							
purely pomegranate	bashful blue	perfect plum	river rock	purely pomegranate	wild wasabi	soft sky	kraft
							
purely pomegranate	blue bayou	always artichoke	old olive	wild wasabi	blue bayou	real red	soft sky
							
purely pomegranate	pale plum	old olive	bravo burgundy	wild wasabi	river rock	blue bayou	chocolate chip



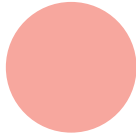
wild wasabi



chocolate chip



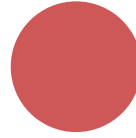
apricot appeal



cameo coral



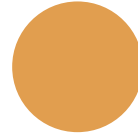
soft sky



ruby red



wild wasabi



more mustard



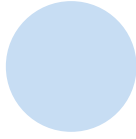
wild wasabi



pumpkin pie



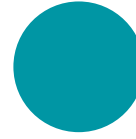
brilliant blue



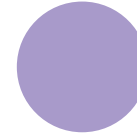
bashful blue



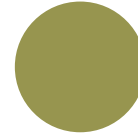
soft sky



taken with teal



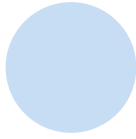
lavender lace



old olive



wild wasabi



bashful blue



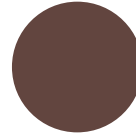
real red



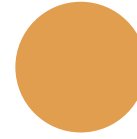
pumpkin pie



soft sky



chocolate chip



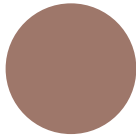
more mustard



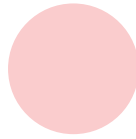
always artichoke



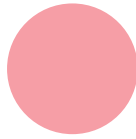
wild wasabi



close to cocoa



pretty in pink



regal rose



soft sky



wild wasabi



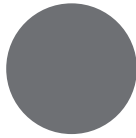
pumpkin pie



rose red



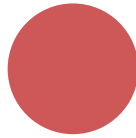
wild wasabi



basic gray



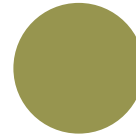
soft sky



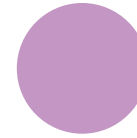
ruby red



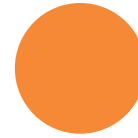
soft sky



old olive



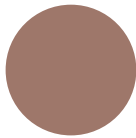
orchid opulence



pumpkin pie



wild wasabi



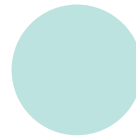
close to cocoa



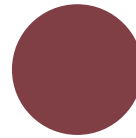
river rock



certainly celery



soft sky



bravo burgundy



always artichoke

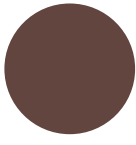


kraft





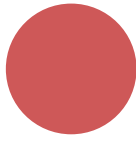
blue bayou



chocolate chip



river rock



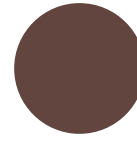
ruby red



blue bayou



certainly celery



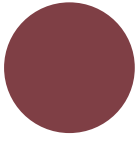
chocolate chip



soft sky



blue bayou



bravo burgundy



mellow moss



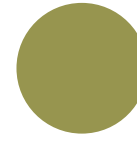
kraft



blue bayou



rose red



old olive



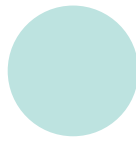
sahara sand



blue bayou



wild wasabi



soft sky



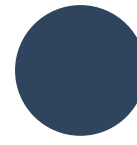
certainly celery



river rock



so saffron



night of navy



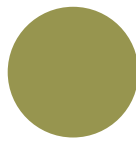
real red



blue bayou



river rock



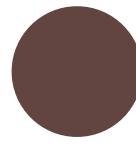
old olive



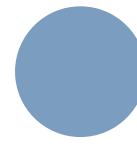
purely pomegranate



river rock



chocolate chip



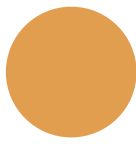
brocade blue



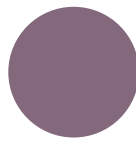
always artichoke



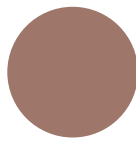
blue bayou



more mustard



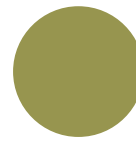
perfect plum



close to cocoa



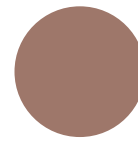
river rock



old olive



handsome hunter



close to cocoa



blue bayou



real red



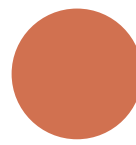
so saffron



wild wasabi



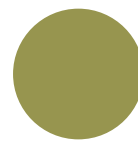
river rock



really rust



sage shadow



old olive



river
rock



soft
sky



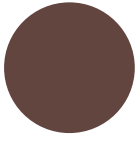
rose
red



chocolate
chip



river
rock



chocolate
chip



pumpkin
pie



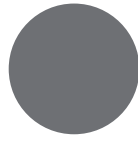
always
artichoke



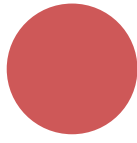
river
rock



mellow
moss



basic
gray



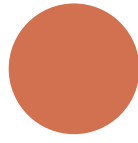
ruby
red



river
rock



blue
bayou



really
rust



kraft