

TULLY CENTRAL SCHOOLS
 20 State Street, Tully, New York 13159
 Telephone: 315-696-6200 Fax: 315-883-1343
<http://tullyschools.org>

MARY ANN MURPHY
 Junior/Senior High School Principal

ROBERT J. HUGHES
 Superintendent of Schools

EDWARD KUPIEC
 Elementary School Principal

PAUL SCHIENER
 Junior/Senior High School Assistant Principal

BRADLEY R. CORBIN
 School Business Administrator

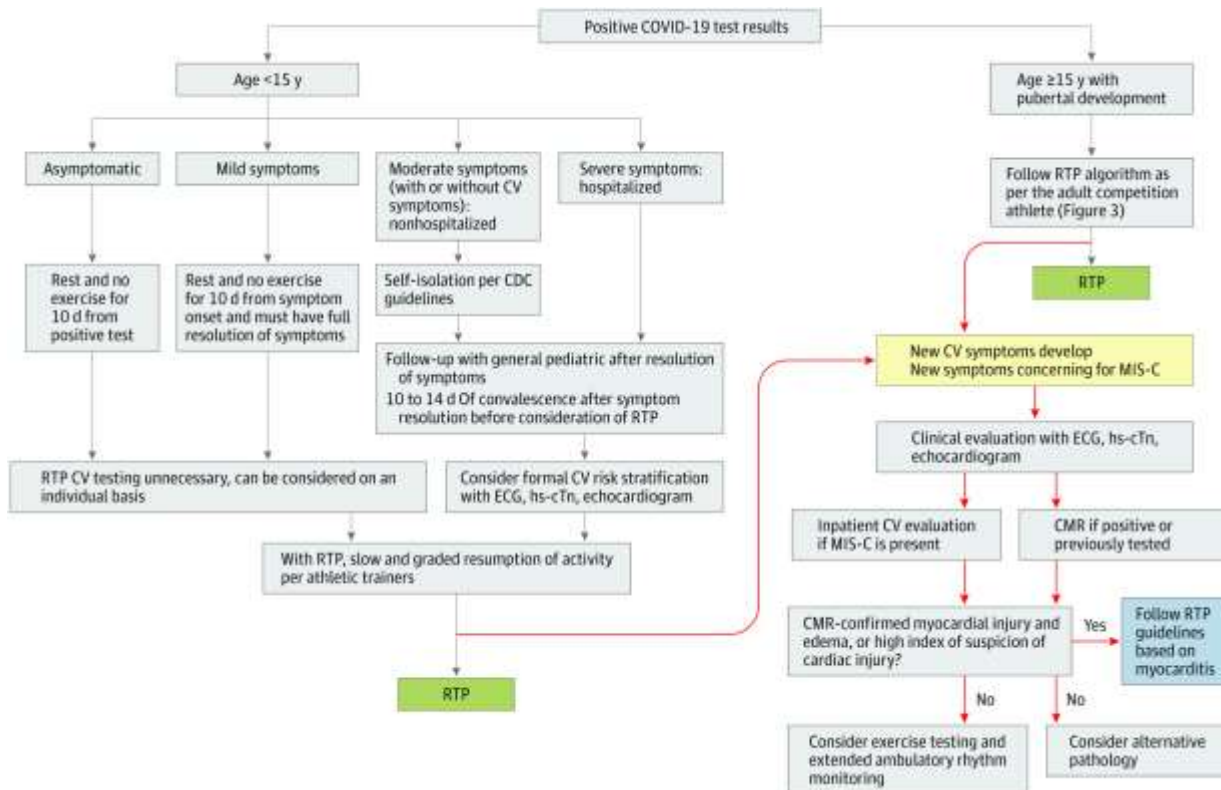
CRISTY BOBBETT
 Director of Student Support Services

March 11, 2021

Covid-19 infection is associated with the development of heart problems, including myocarditis, even in children. Participation in sports or gym while a child has myocarditis puts them at increased risk for sudden death. Because of this, intense research is being undertaken to determine how to tell when it is safe for a child to return to sports or gym class after they have recovered from a COVID-19 infection. In the interest of protecting students from this risk of serious injury or death we have decided to follow the recommendations of major cardiology journals (see the figures below for recent return to play protocols) and national organizations such as the American Association for Pediatrics and required that students recovered from COVID-19 get appropriate return to sports or physical education clearance from their physicians before they are allowed to participate in school sports or gym class.

Paul Klawitter MD, PhD

<https://services.aap.org/en/pages/2019-novel-coronavirus-covid-19-infections/clinical-guidance/covid-19-interim-guidance-return-to-sports/>



Return to Play Protocol greater than 15

